

# PHIL SPACE

The South's Leading Supplier of Temporary and Portable Site Accommodation



## SW7600 Fusion

from Groundhog

Anti-vandal, Static  
Site Accommodation Unit

Mindful of the environment, lightweight, compact & well equipped



# SW7600 Fusion Range

The Groundhog **Static SW7600** Fusion range is incredibly efficient and incorporates all the latest environmental & safety technologies.









## Groundhog SW7600 Fusion

The SW7600 meets HSE & CDM requirements and offers anti-vandal features which include a steel personnel double locking door systems and internally secured steel window shutters, providing all your on-site needs in one compact, cost effective package. Ideal for construction, rail and highways contractors.

The Fusion offers all the benefits of the standard Groundhog units whilst offering a green environmental solution. This gives owners and end users savings by way of reduced fuel usage, reduced generator servicing, longer generator life, fewer breakdowns and massively reduced noise pollution.

- > Warm water supplied by an on-board heating system
- > Air blown heating system
- > Low level lifting
- > High security doors & windows
- > Meets HSE & CDM requirements
- > Fixed low level lifting & fork pockets

## Value Proposition

 <p>Weights <b>4,400kg</b> reducing haulage costs</p>	 <p>Reduced fuel costs <b>up to 60%</b></p>	 <p>CO<sub>2</sub> emission savings <b>up to 60%</b></p>
 <p>Generator service cost saving of <b>£1,750</b></p>	 <p>Potential breakdown costs saving of <b>£1,200</b></p>	 <p><b>Low noise pollution</b></p>

Figures are for guidance only. For your own specific savings, contact us for your bespoke value proposition.

## Specifications

- > Dimensions: **7620mm (L) x 2755mm (W)\***
- > Net Weight: **4,400kg\***

## 1. Welfare Area

---

- Pleasant and light rest area
- Air blown heating system
- Warm water supplied by on-board heating system
- Large stainless steel sink c/w warm water tap
- Microwave and kettle – both hard-wired
- Fresh & waste water containers (20 Ltr cap each)
- 12V LED lighting with PIR
- 1 x single inverter powered socket
- 12V socket and USB (optional)
- Consumer board c/w RCD & MCB's
- Generator control panel with hour run meter
- Paper towels, liquid soap and cup dispenser
- Carbon monoxide monitor and smoke alarm
- High level vent
- 1000mm base unit c/w 10L water heating system
- 12V control panel c/w heater control and battery volt meter

## 2. Drying Area

---

- 12V LED lighting with PIR
- Air blown heating system
- Coat hooks
- Bench seating
- High level window

## 3. Generator Room

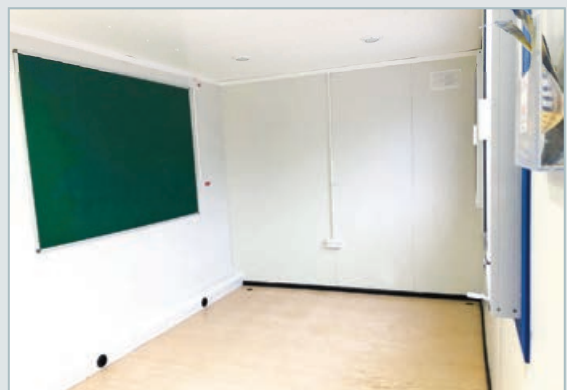
---

- 6kVA super silent diesel generator
- 12V LED lighting with PIR
- 200 litre diesel tank with filler neck and level gauge with Fuel Active system
- Fuel tank runtime = approx. 105 hours
- 130Amp hour battery
- Generator start battery
- 12V 30Amp battery charger
- Battery guard with fuse panel

## 4. Toilet Area

---

- Plastic recirculating toilet c/w ventilation pipe
- Forearm pedestal wash basin c/w warm water tap
- Toilet tank size: 280L
- Warm water supplied by on-board heating system
- Toilet roll holder
- 12V LED lighting with PIR
- Ventilation panel
- Liquid soap and paper towel dispenser
- Mirror





The South's Leading Supplier of Temporary and Portable Site Accommodation

**Philspace Ltd**

Winchester Road, Lower Upham, Hampshire, SO32 1HA

Tel 023 8022 3333 / 01489 860606

Email [enquiries@philspace.co.uk](mailto:enquiries@philspace.co.uk)

[www.philspace.co.uk](http://www.philspace.co.uk)



Manufactured by **groundhog**

Copyright ©2018 Groundhog UK Limited. All rights reserved.

No part of this material may be reproduced in any form  
by any means without the express written permission of Groundhog UK Limited.

\* Weights and sizes shown may vary slightly. Groundhog reserve the right to change specification without prior notice.