

****IMPORTANT-PLEASE NOTE****
ISO TOP CASTINGS FITTED TO TOP OF UNIT ONLY.
STANDARD BASE PADS FITTED TO BOTTOM OF UNIT.

Legend	
	Consumer Unit
	Light Pull-Switch
	4' Vapour Proof Light
	2kW, 'Consort' Downflow Heater c/w Adjustable Thermostat Model No: BHM2T051
	3kW, Oversink, Instant Water Heater
	2kW, Oversink, Instant Water Storage Heater

****PLEASE NOTE****
ISO TOP CASTINGS FITTED TO TOP OF UNIT ONLY.
STANDARD BASE PADS FITTED TO BOTTOM OF UNIT.
 EXTERNAL WALL LINING TO BE MANUFACTURED TO A MAXIMUM THICKNESS OF 100mm.
 H' LEVEL 'AL' FRAMED, SINGLE GLAZED, TOV WINDOWS c/w STEEL MESH GUARDS.
 PHILSPACE FLEET NUMBER STENCILED TO CORNER PILLAR.
 JACKLEGS FITTED TO CORNER PILLARS.
 MALE TOILET CUBICLES SHOWN @ 840mm CENTRES.

Lining Details	
WALLS	EGB2006 & 50mm INSULATION
CEILING	MONO WHITE & 50mm INSULATION
TRIMS	WHITE PLASTIC
FLOOR	VINYL FLOORING OVER 15mm PLYWOOD
PAINT	

PROFILED	<input checked="" type="checkbox"/>		
FLATSIDED	<input type="checkbox"/>		
F	10/05/15	Details	Customer Request: Decal Plates Removed
Rev.			
Drn.	JT	Date	13/05/13

Approved By:
 Name:
 Signature:
 Date:

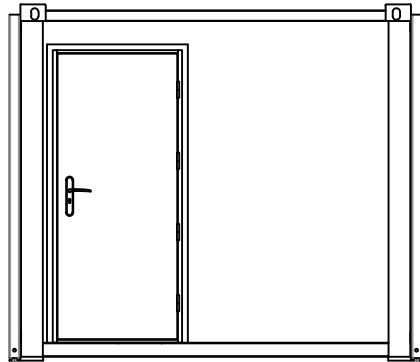
****IMPORTANT-PLEASE NOTE****
ISO TOP CASTINGS FITTED TO TOP OF UNIT ONLY.
STANDARD BASE PADS FITTED TO BOTTOM OF UNIT.

Title:
 Philspace
 12'x9'x8'H, Toilet Unit



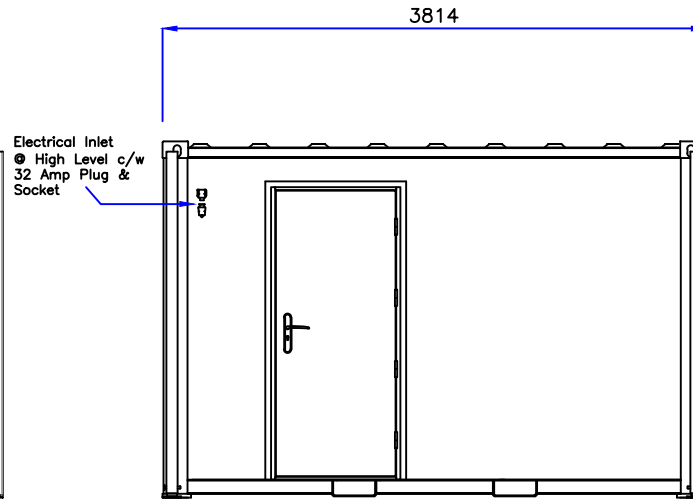
Dwg. No.
 PHL_1209TON01F
 Tab 1 Of 2
 Plan

View B



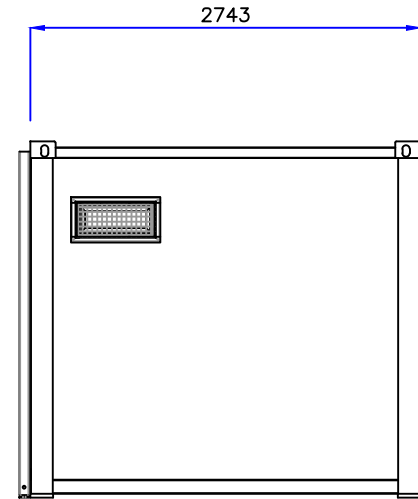
180"
"KIRNCROFT"
PERSONNEL DOOR
FITTED TIGHT TO
CORNER PILLAR

View A

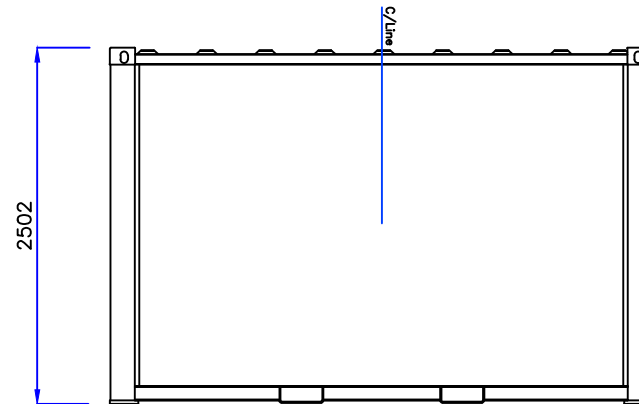


180"
"KIRNCROFT"
PERSONNEL DOOR

View C



View D



1130
Forktunnel Centres

PROFILED		<input checked="" type="checkbox"/>	
FLATSIDED		<input type="checkbox"/>	
F	10/05/15	Details	Customer Request: Decal Plates Removed
Rev.			
Drn.	JT	Date	13/05/13

Approved By:

Name:

Signature:

Date:

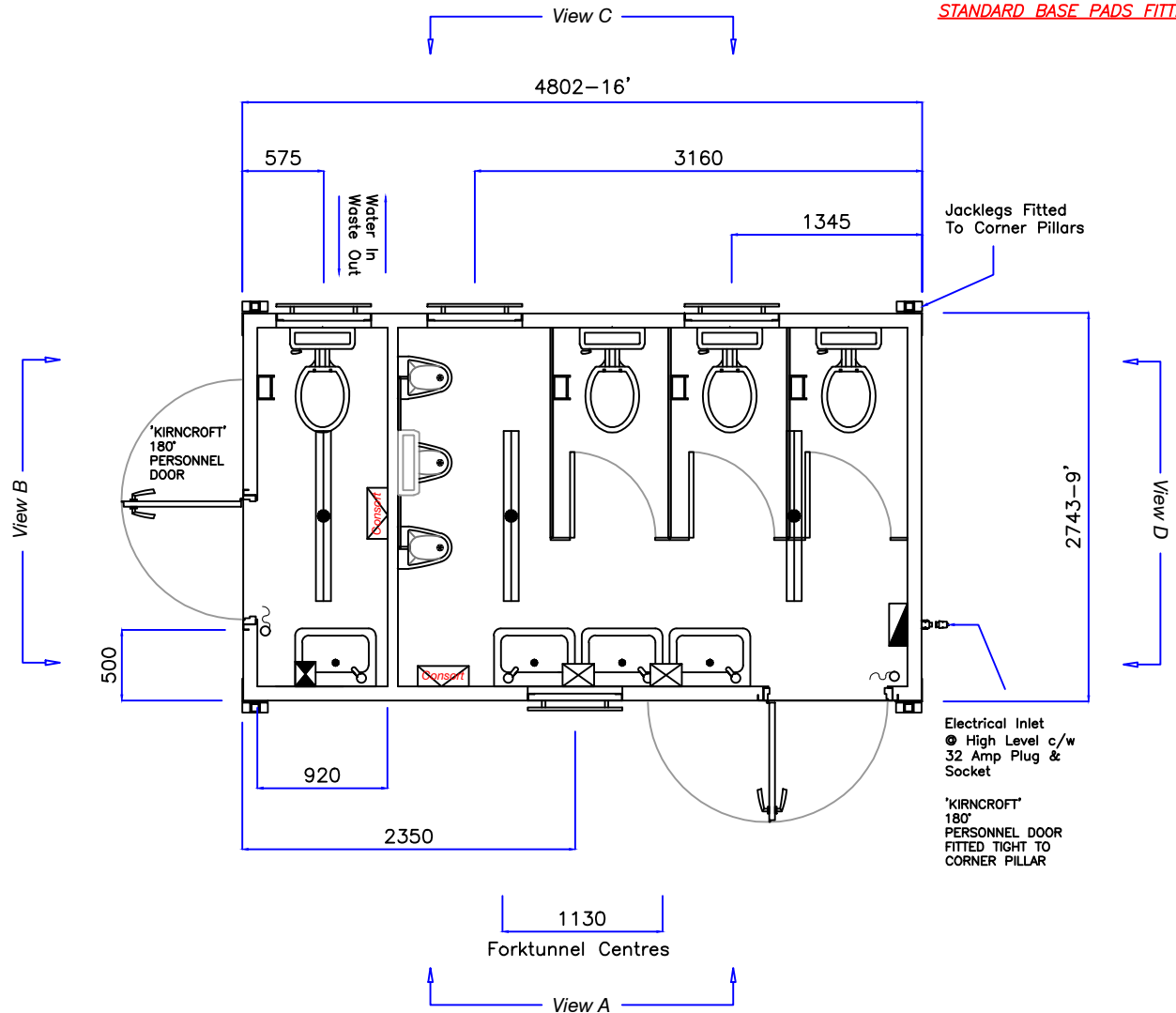
Title:
Philspace
12'x9'x8'H, Toilet Unit



Dwg. No.
PHL_1209TON01F
Tab 2 Of 2
Elevations

****IMPORTANT--PLEASE NOTE****

ISO TOP CASTINGS FITTED TO TOP OF UNIT ONLY.
STANDARD BASE PADS FITTED TO BOTTOM OF UNIT.



Jacklegs Fitted To Corner Pillars

Electrical Inlet
 ● High Level c/w
 32 Amp Plug &
 Socket

'KIRNCROFT'
 180°
 PERSONNEL DOOR
 FITTED TIGHT TO
 CORNER PILLAR

****IMPORTANT--PLEASE NOTE****

ISO TOP CASTINGS FITTED TO TOP OF UNIT ONLY.
STANDARD BASE PADS FITTED TO BOTTOM OF UNIT.

Legend

	Consumer Unit
	Light Pull-Switch
	4' Vapour Proof Light
	2kW, 'Consort' Downflow Heater c/w Adjustable Thermostat Model No: BHM2T051
	3kW, Oversink, Instant Water Heater
	2kW, Oversink, Instant Water Storage Heater

****PLEASE NOTE****

ISO TOP CASTINGS FITTED TO TOP OF UNIT ONLY.
STANDARD BASE PADS FITTED TO BOTTOM OF UNIT.

HI LEVEL WINDOW c/w OBSCURE GLASS
 & STEEL, MESH GUARDS.

EXTERNAL WALL LINING TO BE MANUFACTURED TO A
 MAXIMUM THICKNESS OF 100mm.

PHILSPACE FLEET NUMBER STENCILLED TO CORNER PILLAR.

JACKLEGS FITTED TO CORNER PILLARS.

MALE TOILET CUBICLES SHOWN @ 840mm CENTRES.

Lining Details

WALLS	EGB2006 & 50mm INSULATION
CEILING	MONO WHITE & 50mm INSULATION
TRIMS	WHITE PLASTIC
FLOOR	VINYL FLOORING OVER 15mm PLYWOOD
PAINT	

PROFILED	<input checked="" type="checkbox"/>	
FLATSIDED	<input type="checkbox"/>	
D	10/05/15	Details Customer Request: Decal Plates Removed
Rev.		
Drm.	JT	Date 25/07/14

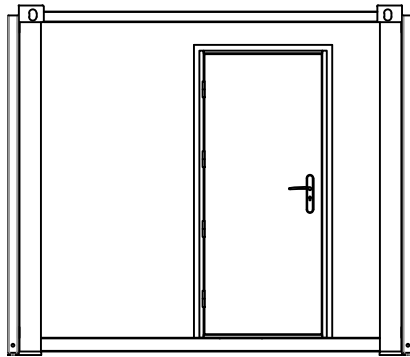
Approved By:
 Name:
 Signature:
 Date:

Title:
 Philspace
 16'x9'x8'H, Toilet Unit



Dwg. No.
 PHL_1609TON01D
 Tab 1 - Plan

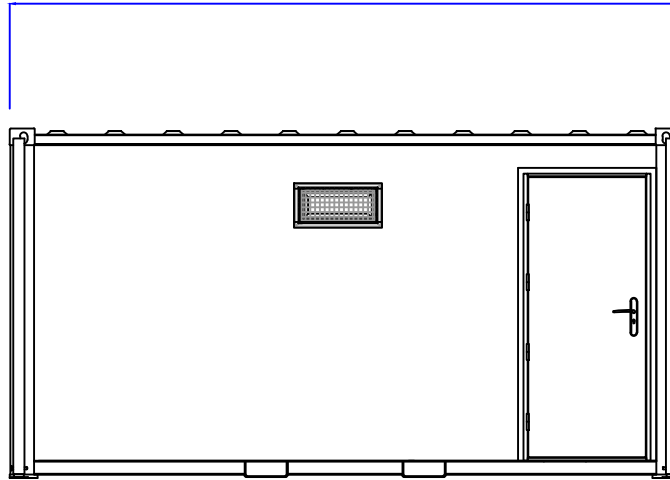
View B



180"
'KIRNCROFT'
PERSONNEL DOOR

View A

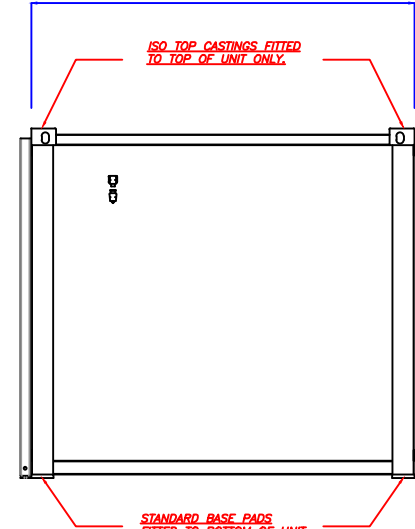
4802



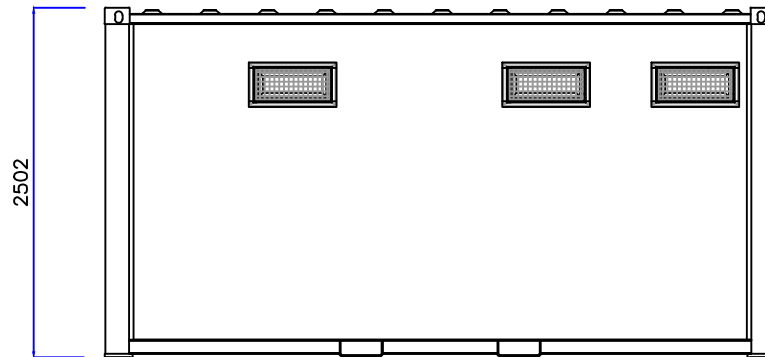
180"
'KIRNCROFT'
PERSONNEL DOOR
FITTED TIGHT TO
CORNER PILLAR

View C

2743



View D



2502

1130

Forktunnel Centres

PROFILED		<input checked="" type="checkbox"/>	
FLATSIDED		<input type="checkbox"/>	
D	10/05/15	Details	Customer Request: Decal Plates Removed
Rev.			
Drm.	JT	Date	25/07/14

Approved By:

Name:

Signature:

Date:

Title:
Philspace
16'x9'x8'H, Toilet Unit



Dwg. No.
PHL_1609TON01D
Tab 2 - Elevations