

PHILSPACE

The South's Leading Supplier of Temporary and Portable Site Accommodation



The Groundhog Welfare Units have been approved by VCA.



GP360 Fusion Range from Groundhog

The latest concept in 12 Volt technology delivers cost effective and environmentally efficient, robust & easy to use
Ground Lowering, Anti-Vandal, Mobile Welfare Units

Accommodating Sustainable Innovations

The single axle **GP360** Fusion range is the latest concept in 12 Volt technology delivering cost effective and environmentally efficient, robust & easy to use ground lowering, anti-vandal, mobile, site accommodation.



Groundhog GP360 Fusion

The Fusion offers the legendary robust and ease of use of the standard Groundhog GP360 whilst offering a green environmental solution. This gives owners and end users savings by way of reduced fuel usage, 60% reduction in generator servicing, longer generator life, fewer breakdowns and massively reduced noise pollution.

Groundhog GP360 Fusion+ (Optional)

The Fusion+ will offer further cost savings as the warm water is supplied by an on board system and will not require the generator to run. Therefore the generator will only be required for microwave and kettle. Additional savings will be found in winter especially if used overnight by security personnel who can utilise the unit with heating and lighting without running the generator.

- > Warm water supplied by an on-board system (optional, Fusion+ only)
- > Air blown heating system
- > Comfortably sits up to 6 people
- > Secured in less than 3 minutes
- > High security doors and windows
- > Meets HSE requirements



Specifications

- >Dimensions: **3655mm (L) x 2284mm (W)***
- >Net Weight: **1660kg***
- >Gross Weight: **1800kg**



Value Proposition

Potential yearly savings for the GP360 Fusion+ (based on units running 12 hour day and 5 day week)

- ✓ Weighs **1800kg** reducing haulage costs
- ✓ Minimum fuel savings of up to **£3,776**
- ✓ CO₂ emissions saving of over **18,000kg**
- ✓ Generator service cost saving of **£1,750**
- ✓ Potential breakdown costs saving of **£1,200**
- ✓ Low noise pollution



1. Welfare Area

- Table and bench seating for up to 6 persons
- 12 Volt L.E.D. Lighting PIR
- Air blown heating system
- Microwave/Kettle
- Warm water tap set over large wrist to elbow sink
- Cooler box (optional)
- Double 13amp socket outlet
- Fresh drinking water container (20 Ltr)



2. Toilet Area

- 12 Volt L.E.D. Lighting PIR
- Standard Recirculating Toilet c/w ventilation pipe
- Forearm wash basin with warm water
- Paper towel & soap dispenser
- Toilet roll holder



3. Warm Room / Generator Area

- 12 Volt L.E.D. Lighting PIR
- Air blown heating system
- Coat hooks
- Ventilation panel
- 6 kVA Diesel Generator with exhaust venting
- Access to fuel tank complete with fuel level gauge (58 Ltr cap)



Interior features that make the GP360 Fusion



GP360 Fusion control panel

GP360 Fusion control panel with battery indicator allows the user to control the heater temperature while the frost stat ensures the unit stays above 5°C.



Under work top storage

Store cutlery, crockery and other kitchen utensils in the handy under work top storage.



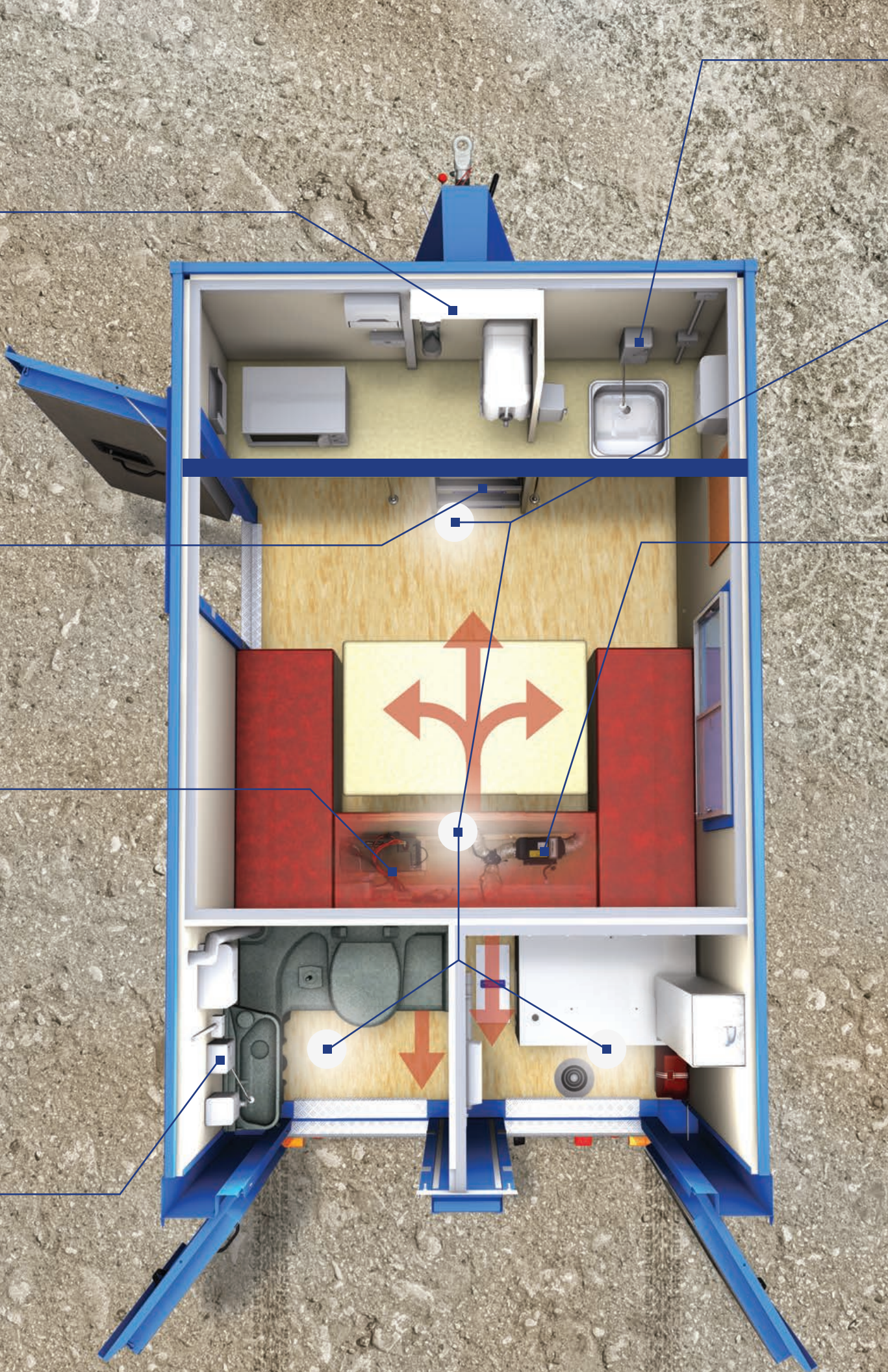
Battery Guard with Pro Charge Ultra

Pro Charge Ultra (a) charges the 130A/hr battery when the generator is running. The Battery Guard (b) prevents the excessive discharge of the battery and protects electronic appliances against overvoltage.



Toilet wash area

Warm water tap set over forearm wash basin with soap and paper towel dispensers.



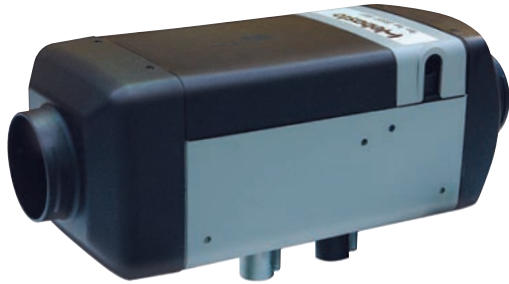
Canteen wash area

Warm water tap set over large wrist to elbow sink with soap and paper towel dispensers.



12V LED PIR lighting

12V LED PIR lighting automatically senses movement turning lights on or off as required. Situated in the canteen, toilet and generator room.

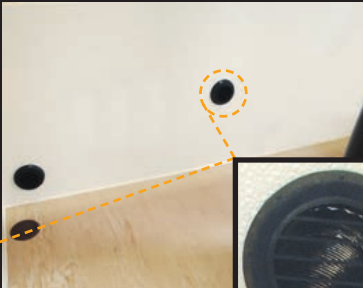


Air blown heating system

The air blown heating system does not require the generator to run continuously due to the on-board battery system saving on fuel and servicing costs. Heating outlets set in canteen, toilet and warm room.



Toilet outlet (Fusion+ only)



Canteen outlets



Fusion+ Option Toilet / canteen wash area

Warm water is supplied by an on board system and will not require the generator to run saving on generator service costs.

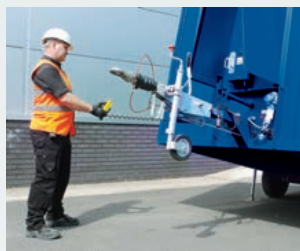
Secured in less than 3 minutes

Easily towed, one man operation secured and manoeuvred on site. Its many safety features make it a high secure and money saving choice of welfare unit for rental companies and contractors.



Unhitch from towing vehicle and operate hydraulics using the push button controls

1 min



Lower unit to the ground and unplug controls



Close & lock canopy to protect towing facility

3 min

Many vandal resistant, safety features



High security window shutters



High secure double lock door with integral window and vent



General features

Canteen

- Table and bench seating for up to 6 persons
- Air blown heating and warm water system Fusion+ (Optional)
- Air blown heating system
- Microwave/Kettle
- Fresh & waste water containers (20 Ltr cap each)
- 240 Volt warm water tap set over large wrist to elbow sink
- 12 Volt L.E.D. Lighting PIR
- Single 2amp socket
- Consumer Board c/w RCD & MCB's
- Generator control panel with hour run meter
- Paper towel dispenser
- Liquid soap dispenser
- Disposable cup dispenser
- Carbon monoxide monitor
- Smoke alarm
- Air Vents
- Fresh drinking water container (20 Ltr)
- Storage area under counter
- Low battery warning light and volt meter
- Battery Guard

Generator / Drying Room

- 12 Volt L.E.D. Lighting PIR
- Air blown heating system
- Coat hooks
- Ventilation panel
- 6 KVA Diesel Generator with exhaust venting through roof area
- Access to fuel tank complete with fuel level gauge (58 Ltr cap)

Toilet Area

- Standard Recirculating Toilet c/w ventilation pipe through roof area
- Paper towel & soap dispenser
- Toilet roll holder
- 12 Volt L.E.D. light with movement sensor
- Ventilation panel
- Warm water set over forearm wash basin

External

- Standard Groundhog mobile unit steel shell with the new lightweight doors, smaller locks box enclosure and shaped nose cone
- Hydraulic 12 Volt electric Power Pack

Optional Extras

- Exterior colour & style
- Panels & Decals
- Lifting eyes
- Flush Ceramic 12 Volt Toilet System
- Delivery Service
- Spare wheel
- 12 Volt LED flood light
- Solar panel
- Toilet / canteen wash area
- Starter Pack
- Safety pack

To find out more about the GP360 Fusion range contact us on...

Tel 023 8022 3333 / 01489 860606

Email enquiries@philspace.co.uk

Philspace Ltd, Winchester Road, Lower Upham, Hampshire, SO32 1HA

* Weights and sizes shown may vary slightly.
Groundhog reserve the right to change specification without prior notice.

www.philspace.co.uk